

LEAD-FREE PIPE MOVEMENT

Lead (Pb on the Periodic Table) is one of the most naturally occurring elements on the planet. With little or no known biological benefit to humans, Lead causes a lot of damage and leads to poisoning when imbibed.

The lead can easily leach or dissolve into the water from transportation pipes and can be fatal. High blood lead levels in children can cause consequences which may be irreversible including learning disabilities, behavioural problems and mental retardation.

SAFE PIPING MATERIAL FOR DRINKING WATER

FIELDS OF APPLICATIONS

- Ring lines / Down take lines
- Swimming pools
- Pipes for hand pumps
- Salt water lines
- Sugar and paper industries
- Industrial process lines
- Aggressive / corrosive fluid transportation
- Coal washing and ash handling

FEATURES & BENEFITS

- Strong and Light Weight
- Durable
- Simple and Leak-Proof Joints
- Maximum Flow Rate
- Good Insulator
- Chemical Resistance

UV STABILIZED

AVAILABLE SIZE

SCH 40: 1.5 cm (1/2") to 30.0 cm (12") (IPS) As per ASTM D1785, D2466



uPVC PRESSURE PIPES

AS PER ASTM D1785

PIPE
SCHEDULE - 40
(3 MTR. LENGTH)

HSN CODE: 3917

Size (cm)	Size (inch)	Product Code	Std. Pkg. (Nos.)
1.5	½	M051400301	50
2.0	¾	M051400302	30
2.5	1	M051400303	20
3.2	1¼	M051400304	15
4.0	1½	M051400305	10
5.0	2	M051400306	08
6.5	2½	M051400307	05
8.0	3	M051400308	03
10.0	4	M051400309	02
15.0	6	M051400310	01
20.0	8	M051400311	01
25.0	10	M051400312	01
30.0	12	M051400313	01

PIPE
SCHEDULE - 40
(6 MTR. LENGTH)

HSN CODE: 3917

Size (cm)	Size (inch)	Product Code	Std. Pkg. (Nos.)
1.5	½	M051400601	30
2.0	¾	M051400602	20
2.5	1	M051400603	15
3.2	1¼	M051400604	10
4.0	1½	M051400605	10
5.0	2	M051400606	06
6.5	2½	M051400607	05
8.0	3	M051400608	03
10.0	4	M051400609	02
15.0	6	M051400610	01
20.0	8	M051400611	01
25.0	10	M051400612	01
30.0	12	M051400613	01

uPVC PRESSURE FITTINGS

SCHEDULE 40 AS PER ASTM D2466



Size (cm)	Size (inch)	Product Code	Std. Pkg. (Nos.)
1.5	½	M052401001	1400
2.0	¾	M052401002	300
2.5	1	M052401003	350
3.2	1¼	M052401004	200
4.0	1½	M052401005	150
5.0	2	M052401006	110
6.5	2½	M052401007	50
8.0	3	M052401008	35
10.0	4	M052401009	24
15.0	6	M052401010	02



Size (cm)	Size (inch)	Product Code	Std. Pkg. (Nos.)
1.5	½	M052400501	1000
2.0	¾	M052400502	500
2.5	1	M052400503	250
3.2	1¼	M052400504	150
4.0	1½	M052400505	110
5.0	2	M052400506	65
6.5	2½	M052400507	35
8.0	3	M052400508	25
10.0	4	M052400509	14
15.0	6	M052400510	03

uPVC PRESSURE FITTINGS

SCHEDULE 40 AS PER ASTM D2466



Size (cm)	Size (inch)	Product Code	Std. Pkg. (Nos.)
1.5	½	M052400801	450
2.0	¾	M052400802	250
2.5	1	M052400803	125
3.2	1¼	M052400804	50
4.0	1½	M052400805	60
5.0	2	M052400806	30



Size (cm)	Size (inch)	Product Code	Std. Pkg. (Nos.)
1.5	½	M052400101	550
2.0	¾	M052400102	300
2.5	1	M052400103	175
3.2	1¼	M052400104	100
4.0	1½	M052400105	70
5.0	2	M052400106	40
6.5	2½	M052400107	27
8.0	3	M052400108	18
10.0	4	M052400109	10
15.0	6	M052400110	02



Size (cm)	Size (inch)	Product Code	Std. Pkg. (Nos.)
1.5	½	M052402301	500
2.0	¾	M052402302	300
2.5	1	M052402303	325
3.2	1¼	M052402304	100
4.0	1½	M052402305	75
5.0	2	M052402306	40



Size (cm)	Size (inch)	Product Code	Std. Pkg. (Nos.)
1.5	½	M052400401	300
2.0	¾	M052400402	150
2.5	1	M052400403	75
3.2	1¼	M052400404	50
4.0	1½	M052400405	40
5.0	2	M052400406	20



Size (cm)	Size (inch)	Product Code	Std. Pkg. (Nos.)
1.5	½	M052402401	200
2.0	¾	M052402402	100
2.5	1	420-010*	10
3.2	1¼	420-012*	10
4.0	1½	420-015*	10
5.0	2	420-020*	10



Size (cm)	Size (inch)	Product Code	Std. Pkg. (Nos.)
2.0 x 1.5	¾ x ½	M052800614	250
2.5 x 1.5	1 x ½	M052800615	150
2.5 x 2.0	1 x ¾	M052800616	150

uPVC PRESSURE FITTINGS

SCHEDULE 40 AS PER ASTM D2466



Size (cm)	Size (inch)	Product Code	Std. Pkg. (Nos.)
1.5	½	M052401301	1700
2.0	¾	M052401302	500
2.5	1	M052401303	500
3.2	1¼	M052401304	480
4.0	1½	M052401305	320
5.0	2	M052401306	192



Size (cm)	Size (inch)	Product Code	Std. Pkg. (Nos.)
1.5	½	M052401601	1300
2.0	¾	M052401602	400
2.5	1	M052401603	400
3.2	1¼	M052401604	130
4.0	1½	M052401605	100
5.0	2	M052401606	70
2.0x1.5	¾x½	M052401614	700



Size (cm)	Size (inch)	Product Code	Std. Pkg. (Nos.)
1.5	½	M052802601	200
2.0	¾	M052802602	120
2.5	1	M052802603	80
3.2	1¼	M052802604	50
4.0	1½	M052802605	80
5.0	2	M052802606	30
6.5	2½	M052802607	15
8.0	3	M052802608	10
10.0	4	M052802609	04



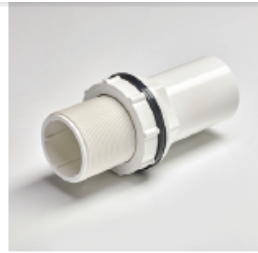
Size (cm)	Size (inch)	Product Code	Std. Pkg. (Nos.)
1.5	½	M052404101	1200
2.0	¾	M052404102	600
2.5	1	M052404103	350
3.2	1¼	M052404104	220
4.0	1½	M052404105	270
5.0	2	M052404106	90
6.5	2½	M052404107	50
8.0	3	M052404108	35
10.0	4	M052404109	22



**TANK ADAPTOR
(THDxTHD)**

HSN CODE: 3917

Size (cm)	Size (inch)	Product Code	Std. Pkg. (Nos.)
1.5	½	M052402501	80
2.0	¾	M052402502	60
2.5	1	M052402503	40
3.2	1¼	M052402504	30
4.0	1½	M052402505	20
5.0	2	M052402506	15



**TANK ADAPTOR
(LONG)
(THDxSPG)**

HSN CODE: 3917

Size (cm)	Size (inch)	Product Code	Std. Pkg. (Nos.)
1.5	½	F052806501	80
2.0	¾	F052806502	60
2.5	1	F052806503	40
3.2	1¼	F052806504	18
4.0	1½	F052806505	12
5.0	2	F052806506	08
6.5	2½	F052806507	15
8.0	3	F052806508	09



**TANK ADAPTOR
(SPIGOT TYPE)
(THDxSPG)**

HSN CODE: 3917

Size (cm)	Size (inch)	Product Code	Std. Pkg. (Nos.)
1.5	½	M052806501	200
2.0	¾	M052806502	140
2.5	1	M052806503	80
3.2	1¼	M052806504	40
4.0	1½	M052806505	30
5.0	2	M052806506	20



**REDUCER
TEE - SOC**

HSN CODE: 3917

Size (cm)	Size (inch)	Product Code	Std. Pkg. (Nos.)
2.0 x 1.5	¾ x ½	M052400214	350
2.5 x 1.5	1 x ½	M052400215	200
2.5 x 2.0	1 x ¾	M052400216	175
3.2 x 1.5	1¼ x ½	M052400217	120
3.2 x 2.0	1¼ x ¾	M052400218	120
3.2 x 2.5	1¼ x 1	M052400219	120



**TANK ADAPTOR
(SOCKET TYPE)
(THDxSOC)**

HSN CODE: 3917

Size (cm)	Size (inch)	Product Code	Std. Pkg. (Nos.)
2.0	¾	M0528010202	75
2.5	1	M0528010203	60
3.2	1¼	M0528010204	70
4.0	1½	M0528010205	60
5.0	2	M0528010206	35

4.0 x 1.5	1½ x ½	M052400220	90
4.0 x 2.0	1½ x ¾	M052400221	40
4.0 x 2.5	1½ x 1	M052400222	80
4.0 x 3.2	1½ x 1¼	M052400223	70
5.0 x 1.5	2 x ½	M052400224	60
5.0 x 2.0	2 x ¾	M052400225	60
5.0 x 2.5	2 x 1	M052400226	60
5.0 x 3.2	2 x 1¼	M052400227	50
5.0 x 4.0	2 x 1½	M052400228	50

uPVC PRESSURE FITTINGS

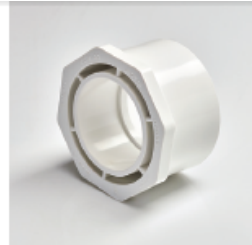
SCHEDULE 40 AS PER ASTM D2466



**REDUCER
COUPLER - SOC**

HSN CODE: 3917

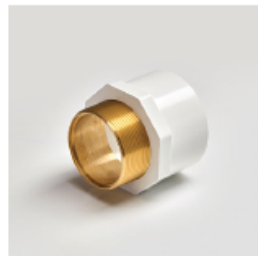
Size (cm)	Size (inch)	Product Code	Std. Pkg. (Nos.)
2.0 x 1.5	3/4 x 1/2	M052401114	400
2.5 x 1.5	1 x 1/2	M052401115	550
2.5 x 2.0	1 x 3/4	M052401116	200
3.2 x 2.0	1 1/4 x 3/4	A052401118	As Req.
3.2 x 2.5	1 1/4 x 1	M052401119	175
4.0 x 2.5	1 1/2 x 1	M052401122	150
4.0 x 3.2	1 1/2 x 1 1/4	M052401123	150
5.0 x 2.5	2 x 1	M052401126	120
5.0 x 3.2	2 x 1 1/4	M052401127	40
5.0 x 4.0	2 x 1 1/2	M052401128	50



**REDUCER
BUSHING
(FLUSH STYLE)
(SPGxSOC)**

HSN CODE: 3917

Size (cm)	Size (inch)	Product Code	Std. Pkg. (Nos.)
2.0 x 1.5	3/4 x 1/2	M052401914	900
2.5 x 1.5	1 x 1/2	M052401915	450
2.5 x 2.0	1 x 3/4	M052401916	450
3.2 x 1.5	1 1/4 x 1/2	M052401917	300
3.2 x 2.0	1 1/4 x 3/4	M052401918	300
3.2 x 2.5	1 1/4 x 1	M052401919	500
4.0 x 1.5	1 1/2 x 1/2	M052401920	350
4.0 x 2.0	1 1/2 x 3/4	M052401921	200
4.0 x 2.5	1 1/2 x 1	M052401922	350
4.0 x 3.2	1 1/2 x 1 1/4	M052401923	400
5.0 x 1.5	2 x 1/2	M052401924	120
5.0 x 2.0	2 x 3/4	M052401925	120
5.0 x 2.5	2 x 1	M052401926	100
5.0 x 3.2	2 x 1 1/4	M052401927	120
5.0 x 4.0	2 x 1 1/2	M052401928	120
6.5 x 3.2	2 1/2 x 1 1/4	M052401932	25
6.5 x 4.0	2 1/2 x 1 1/2	M052401933	50
6.5 x 5.0	2 1/2 x 2	M052401934	60
8.0 x 4.0	3 x 1 1/2	M052401939	35
8.0 x 5.0	3 x 2	M052401940	35
8.0 x 6.5	3 x 2 1/2	M052401941	35
10.0 x 5.0	4 x 2	M052401947	20
10.0 x 6.5	4 x 2 1/2	M052401948	10
10.0 x 8.0	4 x 3	M052401949	20



**REDUCER MABT -
BRASS THREAD**

HSN CODE: 3917

Size (cm)	Size (inch)	Product Code	Std. Pkg. (Nos.)
2.0 x 1.5	3/4 x 1/2	M052801414	150
2.5 x 1.5	1 x 1/2	M052801415	100
2.5 x 2.0	1 x 3/4	M052801416	100



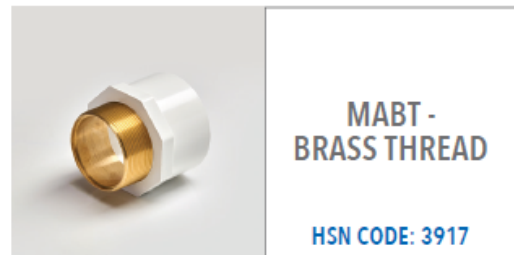
Size (cm)	Size (inch)	Product Code	Std. Pkg. (Nos.)
2.0 x 1.5	$\frac{3}{4}$ x $\frac{1}{2}$	M052801714	100
2.5 x 1.5	1 x $\frac{1}{2}$	M052801215	100
2.5 x 2.0	1 x $\frac{3}{4}$	M052801216	75



Size (cm)	Size (inch)	Product Code	Std. Pkg. (Nos.)
2.5 x 1.5	1 x $\frac{1}{2}$	M052802015	250



Size (cm)	Size (inch)	Product Code	Std. Pkg. (Nos.)
1.5 x 1.5	$\frac{1}{2}$ x $\frac{1}{2}$	M052800701	100
2.0 x 1.5	$\frac{3}{4}$ x $\frac{1}{2}$	M052800714	100
2.0 x 2.0	$\frac{3}{4}$ x $\frac{3}{4}$	M052800702	75
2.5 x 1.5	1 x $\frac{1}{2}$	M052800715	50
2.5 x 2.0	1 x $\frac{3}{4}$	M052800716	50
2.5 x 2.5	1 x 1	M052800703	50



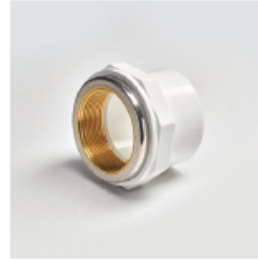
Size (cm)	Size (inch)	Product Code	Std. Pkg. (Nos.)
1.5	$\frac{1}{2}$	M052801401	150
2.0	$\frac{3}{4}$	M052801402	100
2.5	1	M052801403	60
3.2	1 $\frac{1}{4}$	M052801404	50
4.0	1 $\frac{1}{2}$	M052801405	40
5.0	2	M052801406	20
6.5	2 $\frac{1}{2}$	M052801407	09
8.0	3	M052801408	08



BRASS TEE

HSN CODE: 3917

Size (cm)	Size (inch)	Product Code	Std. Pkg. (Nos.)
1.5 x 1.5	½ x ½	M052800301	100
2.0 x 1.5	¾ x ½	M052800314	50
2.0 x 2.0	¾ x ¾	M052800302	50
2.5 x 1.5	1 x ½	M052800315	25
2.5 x 2.0	1 x ¾	M052800316	25
2.5 x 2.5	1 x 1	M052800303	30
3.2 x 1.5	1¼ x ½	M052800317	20



FABT - BRASS THREAD

HSN CODE: 3917

Size (cm)	Size (inch)	Product Code	Std. Pkg. (Nos.)
1.5	½	M052801701	100
2.0	¾	M052801702	100
2.5	1	M052801703	50
3.2	1¼	M052801704	40
4.0	1½	M052801705	30
5.0	2	M052801706	15
6.5	2½	M052801707	09
8.0	3	M052801708	07
10.0	4	M052801709	As Req.

uPVC PRESSURE FITTINGS

SCHEDULE 40 AS PER ASTM D2466



**BALL VALVE -
ASTRAL -
SOC**

HSN CODE: 8481

Size (cm)	Size (inch)	Product Code	Std. Pkg. (Nos.)
1.5	½	M052402701	80
2.0	¾	M052402702	100
2.5	1	M052402703	70
3.2	1¼	M052402704	40
4.0	1½	M052402705	30
5.0	2	M052402706	15



**BALL VALVE -
SOC**

HSN CODE: 8481

Size (cm)	Size (inch)	Product Code	Std. Pkg. (Nos.)
1.5	½	910-041*	100
2.0	¾	910-061*	100
2.5	1	910-081*	100
3.2	1¼	910-101*	100
4.0	1½	910-121*	48
5.0	2	910-161*	24
6.5	2½	910-171*	12
8.0	3	910-181*	12
10.0	4	910-201*	06



**BALL VALVE -
ASTRAL -
SOC**

HSN CODE: 8481

Size (cm)	Size (inch)	Product Code	Std. Pkg. (Nos.)
1.5	1/2	M052802701	48
2.0	3/4	M052802702	36
2.5	1	M052802703	16
3.2	1 1/4	M052802704	10
4.0	1 1/2	M052802705	08
5.0	2	M052802706	06



METAL STRAP

HSN CODE: 7301

Size (cm)	Size (inch)	Product Code	Std. Pkg. (Nos.)
1.5	1/2	PVC9120M	800
2.0	3/4	PVC9340M	500
2.5	1	PVC9100M	400
3.2	1 1/4	PVC9105M	300
4.0	1 1/2	PVC9106M	250
5.0	2	PVC9200M	200



**BALL VALVE -
SPEARS -
SOC**

HSN CODE: 8481

Size (cm)	Size (inch)	Product Code	Std. Pkg. (Nos.)
1.5	1/2	2622-005*	25
2.0	3/4	2622-007*	25
2.5	1	2622-010*	10
3.2	1 1/4	2622-012*	10
4.0	1 1/2	2622-015*	10
5.0	2	2622-020*	10
6.5	2 1/2	2622-025*	05
8.0	3	2622-030*	03
10.0	4	2622-040*	01
15.0	6	2622-060*	01



**LONG RADIUS
BEND 90° -
SOC**

HSN CODE: 3917

Size (cm)	Size (inch)	Product Code	Std. Pkg. (Nos.)
1.5	½	F052400901	120
2.0	¾	F052400902	85
2.5	1	F052400903	50
3.2	1¼	F052400904	30
4.0	1½	F052400905	18
5.0	2	F052400906	12
6.5	2½	F052400907	06
8.0	3	F052400908	05
10.0	4	F052400909	As Req.
15.0	6	F052400910	As Req.



**EXTENSION
PIECES -
CHROME PLATED**

HSN CODE: 7412

Size (cm)	Size (inch)	Product Code	Std. Pkg. (Nos.)
2.5	½ x 1	T143-010M	As Req.
4.0	½ x 1½	T143-015M	As Req.
5.0	½ x 2	T143-020M	As Req.
6.5	½ x 2½	T143-025M	As Req.
8.0	½ x 3	T143-030M	As Req.
10.0	½ x 4	T143-040M	As Req.
12.5	½ x 5	T143-050M	As Req.
15.0	½ x 6	T143-060M	As Req.
2.5	½ x 1	T143-010H	As Req.
4.0	½ x 1½	T143-015H	As Req.
5.0	½ x 2	T143-020H	As Req.
6.5	½ x 2½	T143-025H	As Req.
8.0	½ x 3	T143-030H	As Req.
10.0	½ x 4	T143-040H	As Req.
12.5	½ x 5	T143-050H	As Req.
15.0	½ x 6	T143-060H	As Req.



**STEP OVER
BEND -
SOC**

HSN CODE: 3917

Size (cm)	Size (inch)	Product Code	Std. Pkg. (Nos.)
1.5	½	F052402801	90
2.0	¾	F052402802	60
2.5	1	F052402803	30
3.2	1¼	F052402804	25
4.0	1½	F052402805	20
5.0	2	F052402806	10



**uPVC 705
TUBE
MEDIUM
BODIED**

HSN CODE: 3506

Qty. (ml)	Product Code	Std. Pkg. (Nos.)
22.17 ml	TIPS2217P705	48
44 ml	TIPS44P705	24



**uPVC 705
MEDIUM
BODIED**

HSN CODE: 3506

Qty. (ml)	Product Code	Std. Pkg. (Nos.)
50 ml	TIPS50P705	48
118 ml	TIPS118P705	24
237 ml	TIPS237P705	24
473 ml	TIPS473P705	12
946 ml	TIPS946P705	12



**uPVC 717
HEAVY
BODIED**

HSN CODE: 3506

Qty. (ml)	Product Code	Std. Pkg. (Nos.)
473 ml	TIPS473P717	12
946 ml	TIPS946P717	12



**uPVC 735
MEDIUM
BODIED**

HSN CODE: 3506

Qty. (ml)	Product Code	Std. Pkg. (Nos.)
473 ml	MIPS473P735	12
946 ml	MIPS946P735	12



RESCUE TAPE

HSN CODE: 3919

Size (Ft.)	Product Code	Std. Pkg. (Nos.)
5	RSCU-TAPE-05-CLR	120
5	RSCU-TAPE-05-RED	120
5	RSCU-TAPE-05-BLK	120
10	RSCU-TAPE-10-CLR	120
10	RSCU-TAPE-10-RED	120
10	RSCU-TAPE-10-BLK	120
15	RSCU-TAPE-15-CLR	120
15	RSCU-TAPE-15-RED	120
15	RSCU-TAPE-15-BLK	120



PTFE TAPE

HSN CODE: 3919

Size (Mtr.)	Product Code	Std. Pkg. (Nos.)
5	PTFE-1205	As Req.
10	PTFE-1210	As Req.
20	PTFE-1220	As Req.



**P-70 PRIMER
MEDIUM
BODIED**

HSN CODE: 3506

Qty. (ml)	Product Code	Std. Pkg. (Nos.)
473 ml	TEZ-221	12
946 ml	TEZ-220	12



**RATCHET
CUTTER**

HSN CODE: 8211

Size (cm)	Size (inch)	Product Code	Std. Pkg. (Nos.)
1.5 - 3.2	½ - 1¼	TTOOLS-1	As Req.



**BONDSET
FAST SETTING**

HSN CODE: 3214

Qty. (gm)	Product Code	Std. Pkg. (Nos.)
50	BONDSETFS-50	As Req.
100	BONDSETFS-100	As Req.

WIDEST RANGE OF PRODUCTS

PLUMBING PIPES & FITTINGS

CPVC PRO

Pex-a PRO

Aquarius

SEWERAGE DRAINAGE PIPES & FITTINGS

Silencio

DrainMaster

Foamcore

DrainHulk

Underground

D-Rex

RexTP

AGRICULTURE PIPES & FITTINGS

Bore-Well

Case-Well

Aquasafe

AquaRex

Geo-Rex

SURFACE DRAINAGE SYSTEM

Hauraton

INDUSTRIAL PIPES & FITTINGS

Chem PRO

Aquarius Plus

FIRE SPRINKLERS PIPES & FITTINGS

Fire PRO

CABLE PROTECTION

Wire Guard

TeleRex

URBAN INFRASTRUCTURE

Plus+StiRex

Pre-StiRex

INSULATION TUBE

Insu PRO